

Socrates Sculpture Park, Long Island City, Queens, NY

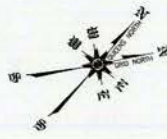




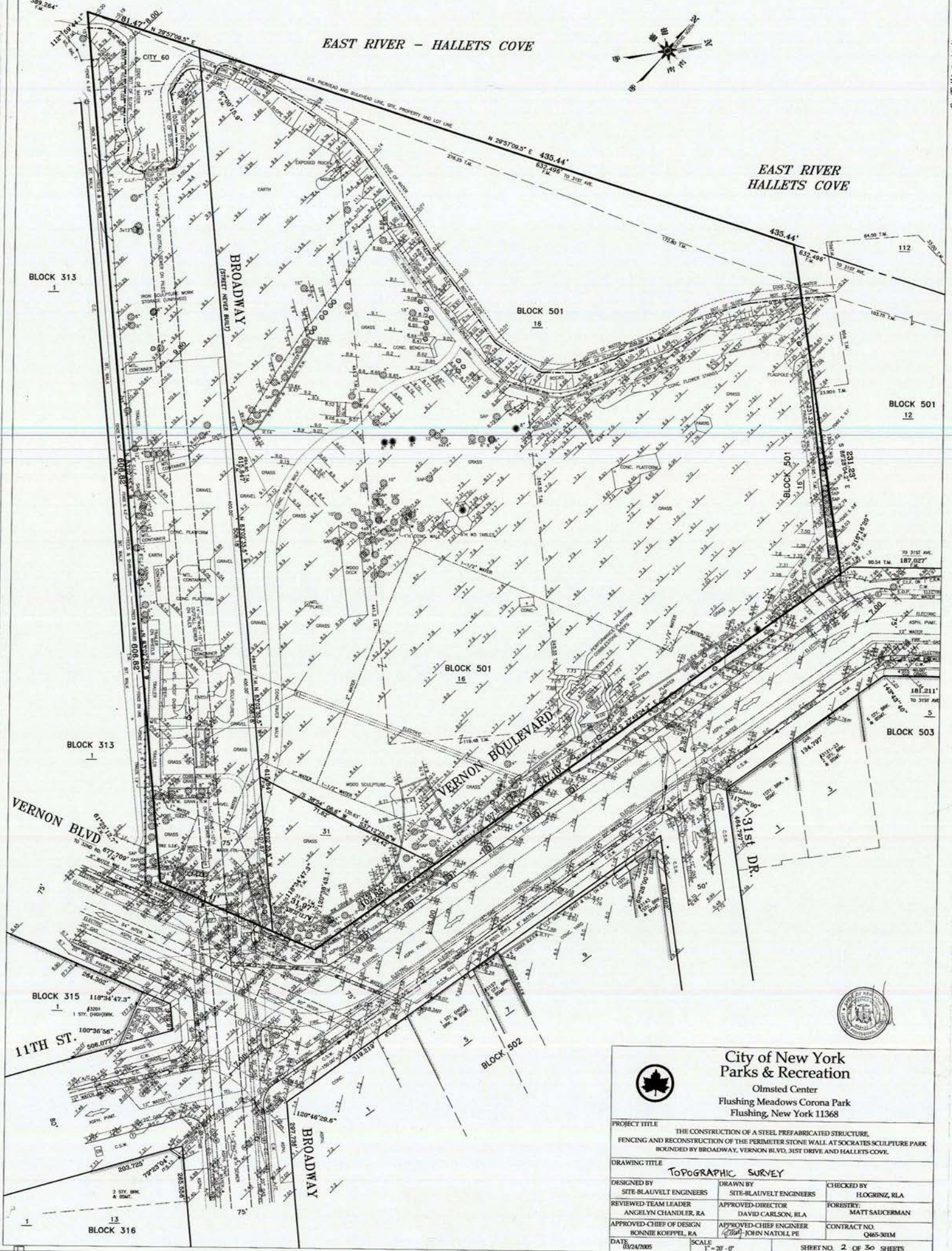
"education corridor"




EAST RIVER - HALLETS COVE



EAST RIVER
HALLETS COVE





**City of New York
Parks & Recreation**
Olmsted Center
Flushing Meadows Corona Park
Flushing, New York 11368

| | | |
|---|-------------------------|----------------|
| PROJECT TITLE | | |
| THE CONSTRUCTION OF A STEEL PREFABRICATED STRUCTURE, FENCING AND RECONSTRUCTION OF THE PERIMETER STONE WALL AT SOCRATES SCULPTURE PARK BOUNDED BY BROADWAY, VERNON BLVD, 31ST DRIVE AND HALLETS COVE. | | |
| DRAWING TITLE | | |
| TOPOGRAPHIC SURVEY | | |
| DESIGNED BY | DRAWN BY | CHECKED BY |
| SITE-BLAUVELT ENGINEERS | SITE-BLAUVELT ENGINEERS | HOGRINZ, RLA |
| REVIEWED-TEAM LEADER | APPROVED-DIRECTOR | FORESTRY: |
| ANGELYN CHANDLER, RA | DAVID CARLSON, RLA | MATT SAUCERMAN |
| APPROVED-CHIEF OF DESIGN | APPROVED-CHIEF ENGINEER | CONTRACT NO. |
| BONNIE KOEPEL, RA | JOHN NATOL, PE | 0465-301M |
| DATE | SCALE | SHEET NO. |
| 03/24/2005 | 1" = 20' - 0" | 2 OF 30 SHEETS |

Q-T-465-104

Socrates Sculpture Park "education corridor" views

