

Word Play

Project Description

Word Play is a small-scale free library near the entrance of 82 Rutgers Slip in the Lower East Side of New York City. The project was done in collaboration with the Two Bridges Neighborhood Council, a community organization in the area. Playing with the ideas of stacking and perspective, the piece uses layered plywood to allude to the vertical patterns produced by books on a bookshelf as well as create multiple visual effects based on the angle one views the library. Located in a diverse community made up of English, Spanish, and Chinese speakers, this visual effect allows the library to convey the message “LIBRARY” (printed on the surface of the piece) in these three languages all at once. By doing so, *Word Play* seeks to capture the heterogeneous nature of the neighborhood. In addition to the small-scale book shelter that provides two linear feet of bookshelf space, the piece includes seating that faces the East River waterfront so that the library becomes a place where people can stay to read, share with their neighbors, and enjoy the view.



Materials List

Materials	Quantity
4' x 8' sheet of 3/4" MDO plywood	5
72" long 5/8" dia. threaded steel rod	3
36" long 5/8" dia. threaded steel rod	1
72" long 1/4" dia. threaded steel rod	1
5/8" nuts and washers	8
1/4" nuts and washers	4
16 fl. oz. exterior grade wood glue	1
1 qt. white flat exterior paint + primer	1
1 qt. turquoise flat exterior paint + primer	1
1 qt. tangerine red flat exterior paint + primer	1
1 qt. lime green flat exterior paint + primer	1
1 qt. outdoor clear satin spar urethane	1
Metal handle	1
12" hinge	1
Magnetic catch	1
1x2x4' pine	1
3/4"x1/8" aluminum flat bar	1
Rubber weatherstrip	1
1/8" thick acrylic sheet	1



Building Instructions

Disclaimer:

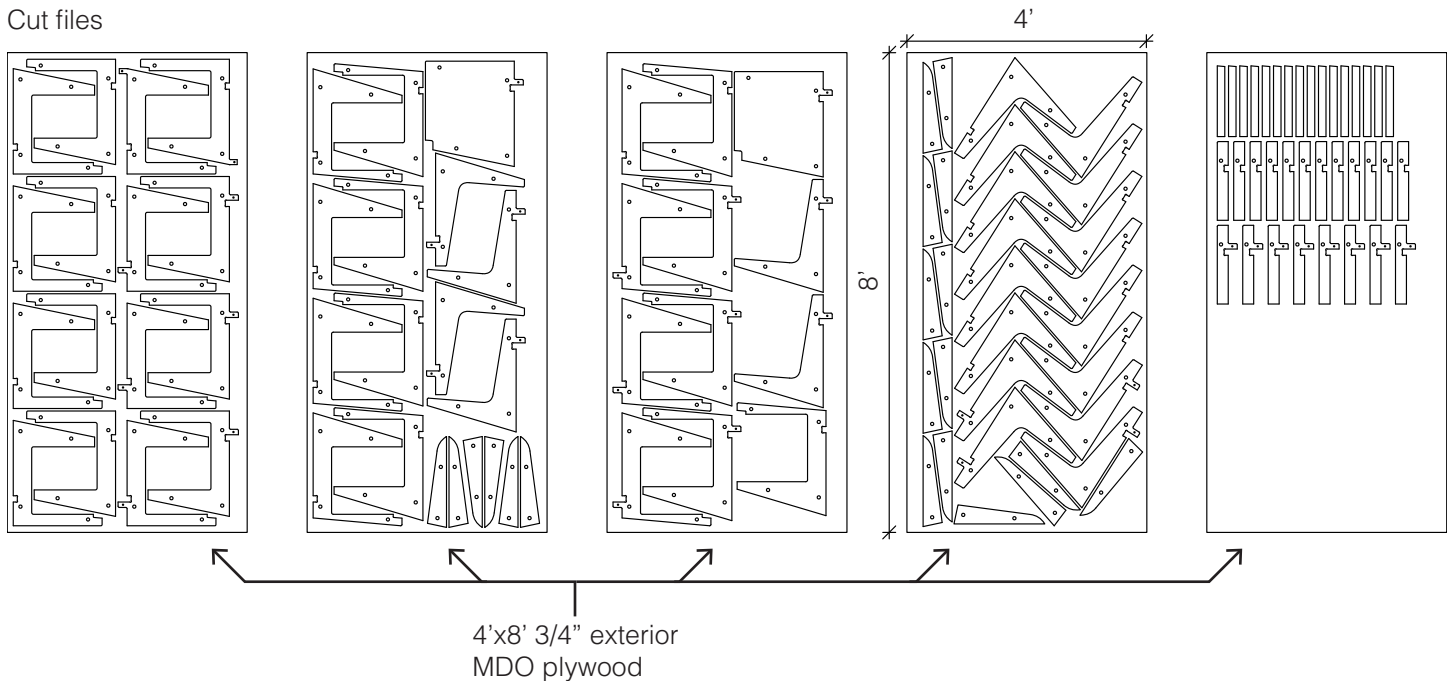
Word Play is a site specific project that uses an existing fence as a support structure. The measurements used to create the piece are based on a fence located at 82 Rutgers Slip, New York, NY. Adjustments to the design of the library should be made based on the measurements of other fences. One should consult an architect and/or structural engineer to determine the structural strength of the fence where the piece is intended to be installed.

Neither the artist, Chat Travieso, nor any of the organizations involved in Little Free Libraries/New York will be held liable for any incidental or consequential damages that arise from the replication and/or installation of this piece.

1 - Cut it

In order to get accurate profiles, use a CNC mill to cut all the pieces. Use 4'x8' 3/4" exterior grade medium density overlay (MDO) plywood. See file "Cut Files.dwg" for the cut files. The CNC operator may want to adjust the nesting of the profiles.

Cut files



2 - Paint it

Before painting, tape all the edges of the pieces that will be painted with painter's tape to prevent paint from getting on them. Prime all surfaces that will be painted with two layers of exterior latex white paint + primer.



Once all the paint is dry, use a projector to trace all the letters. See "Paint instructions.pdf" for the letters to be traced. Use painter's tape to cover the letters.

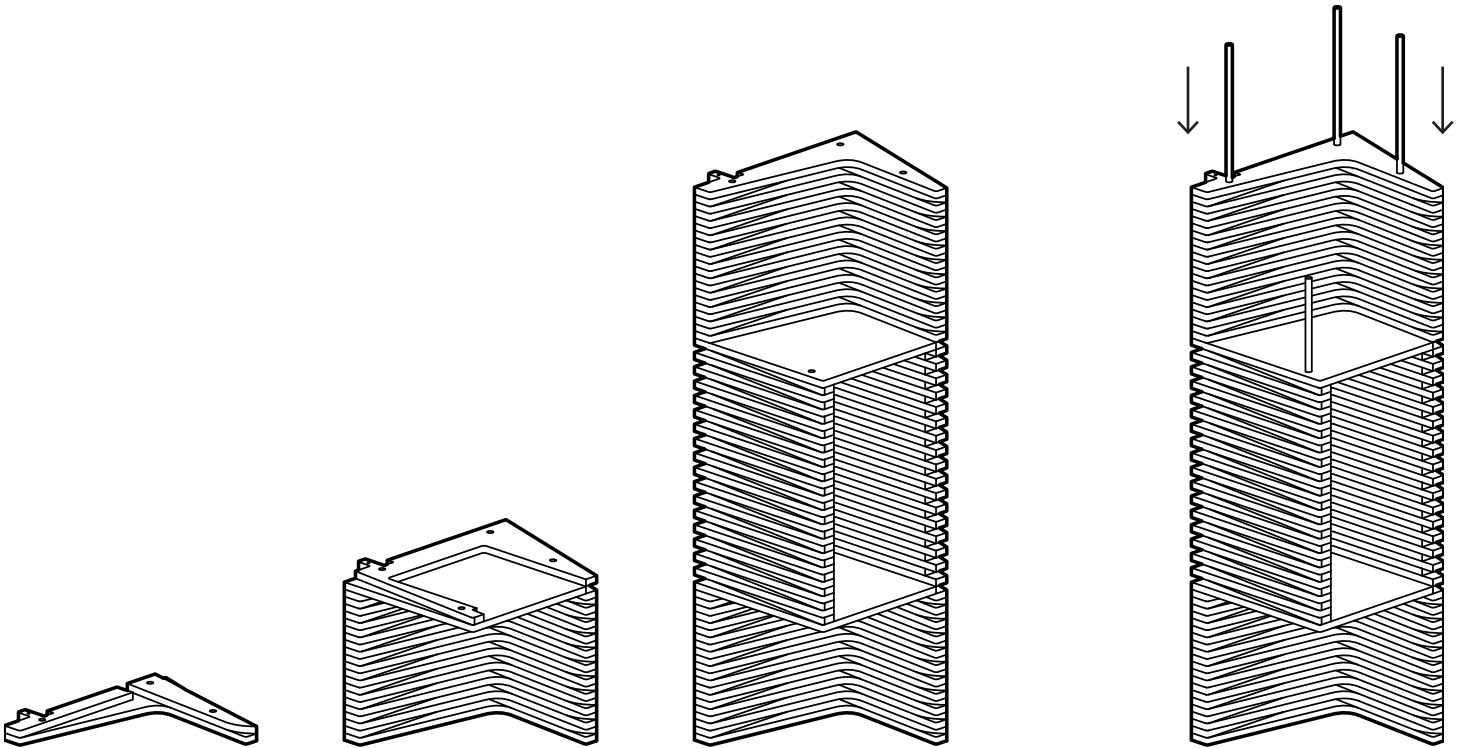


Paint the plywood pieces using the instructions in "Paint instructions.pdf." Apply two layers of the exterior latex paint. Once the paint is dry, remove all the tape. Paint all surfaces with two layers of the spar urethane for waterproofing.



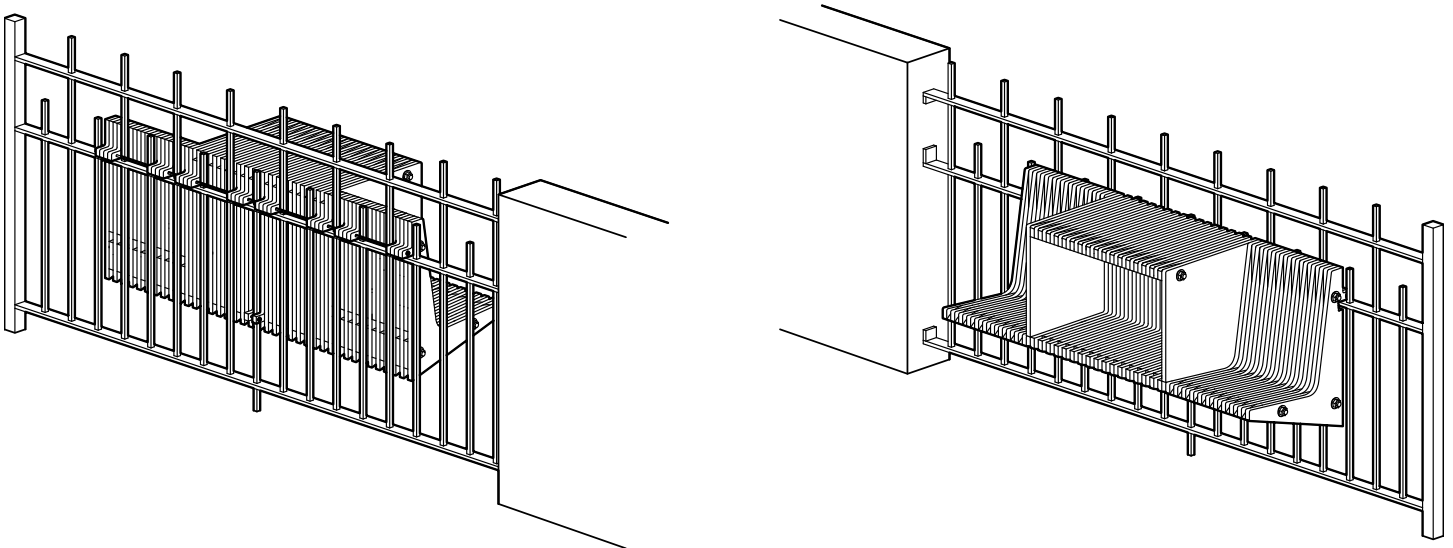
3 - Stack it

Once everything is dry, stack all the pieces in order. Apply exterior wood glue between each piece. Make sure the pieces line up using the drilled holes as a register point. Drive the 5/8" threaded rods through the four register points. Add the washers and nuts to each end of the rods and bolt the piece together. Cut the excess threaded rod.

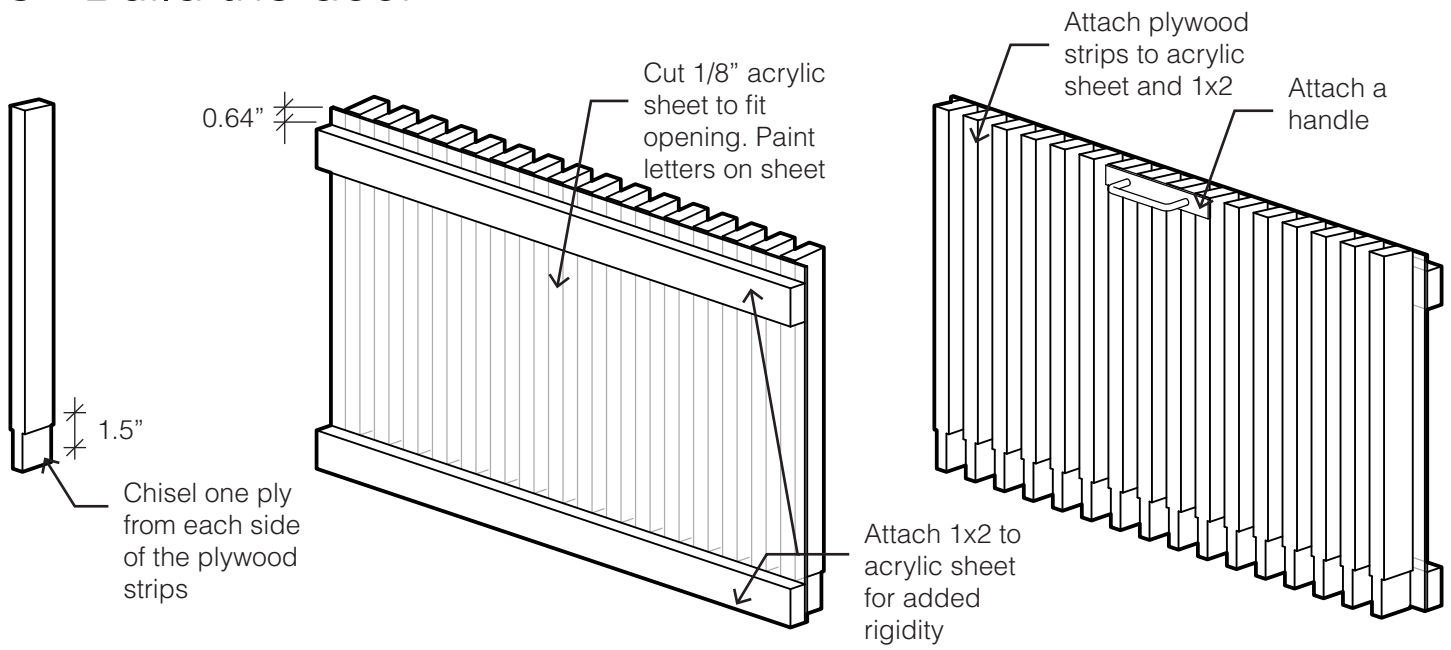


4 - Hang it

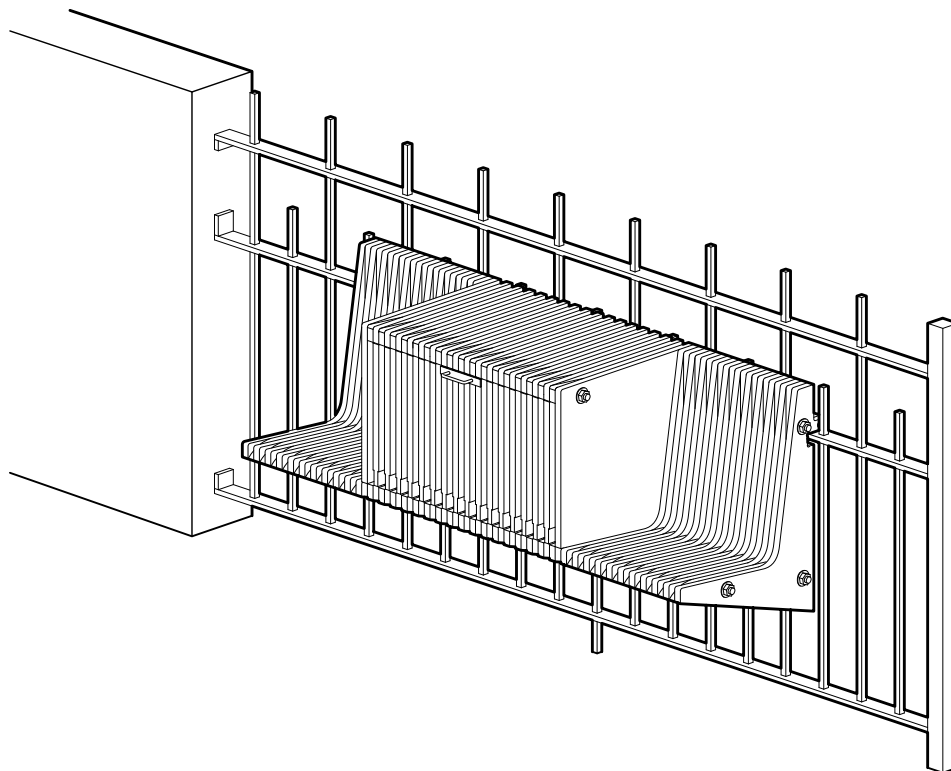
Add two more layers of the spar urethane after the glue dries. Wait for the spar urethane to dry before attaching the library to the fence. Once the library is hung, run the 1/4" threaded rod through the back. Bolt it and cut the excess,



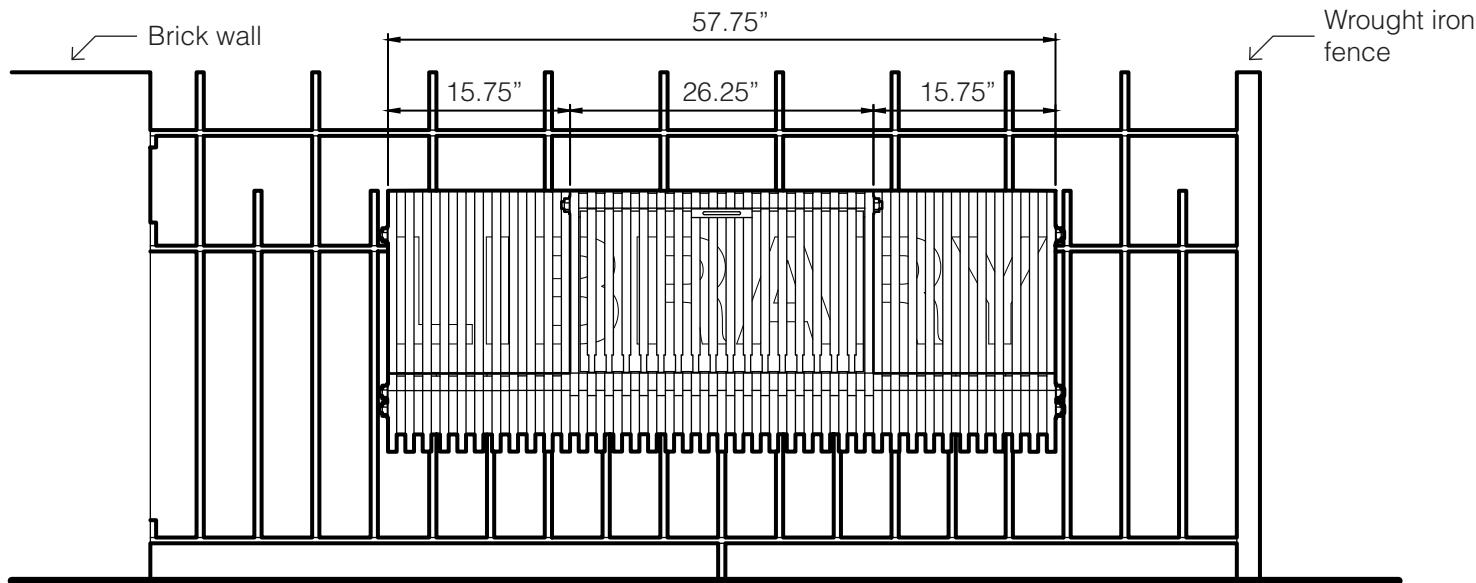
5 - Build the door



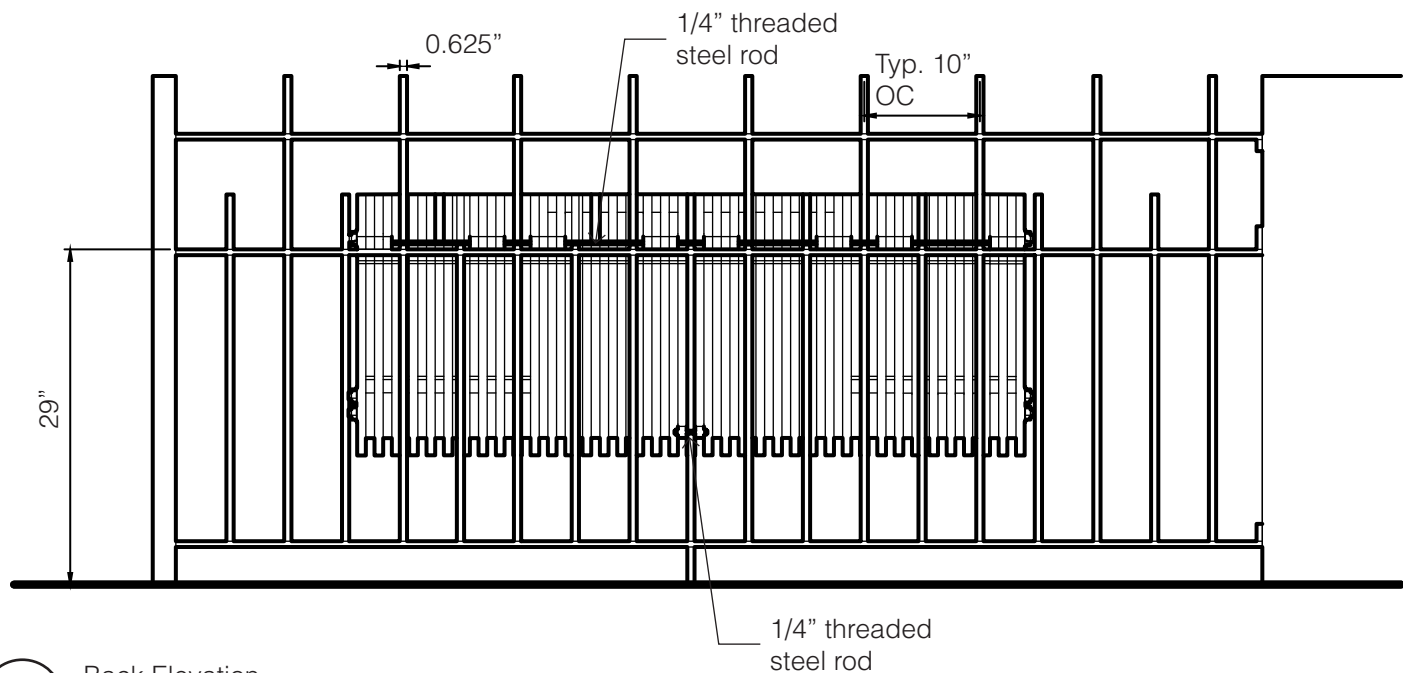
6 - Attach the door



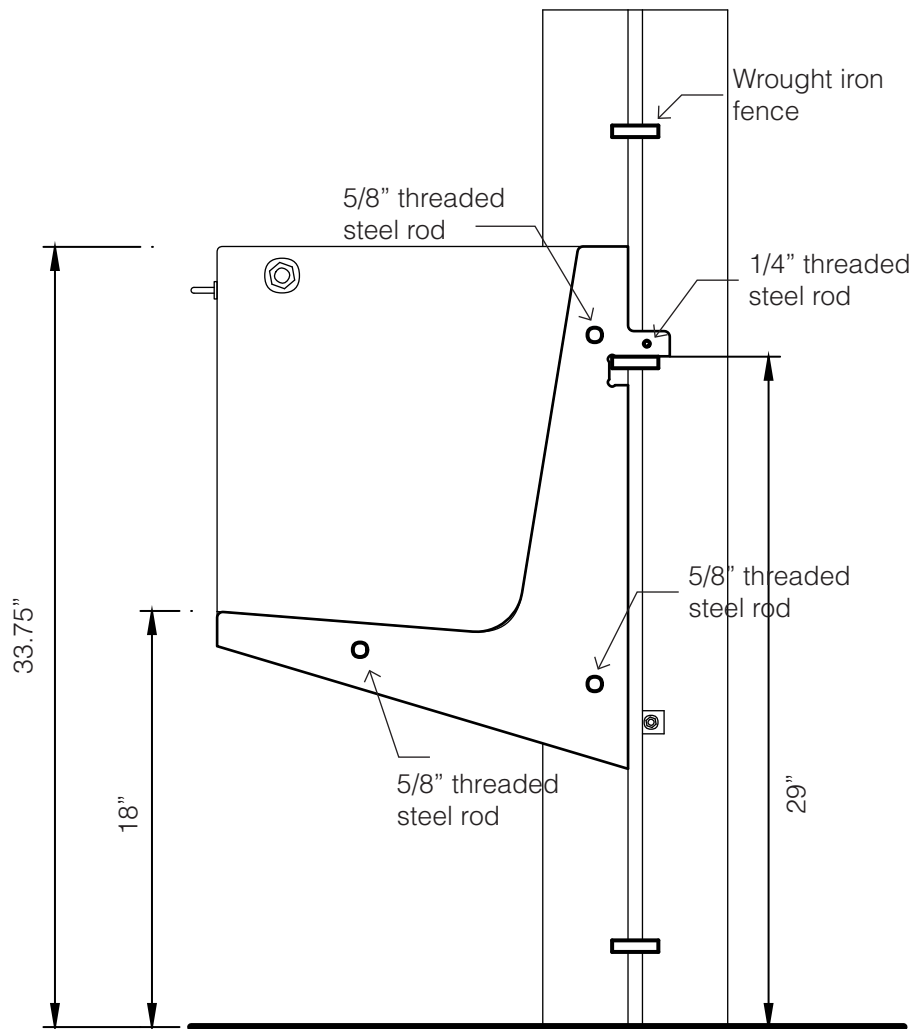
Construction Documents



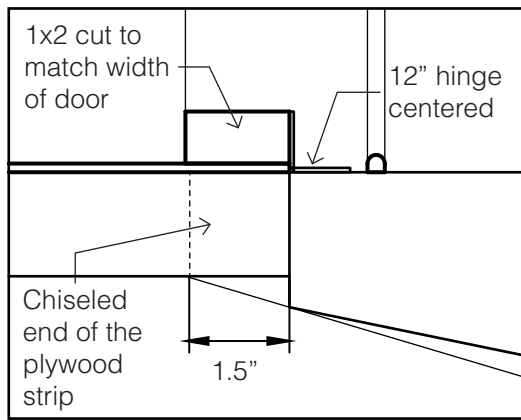
1 Front Elevation
Scale: 1"=1'



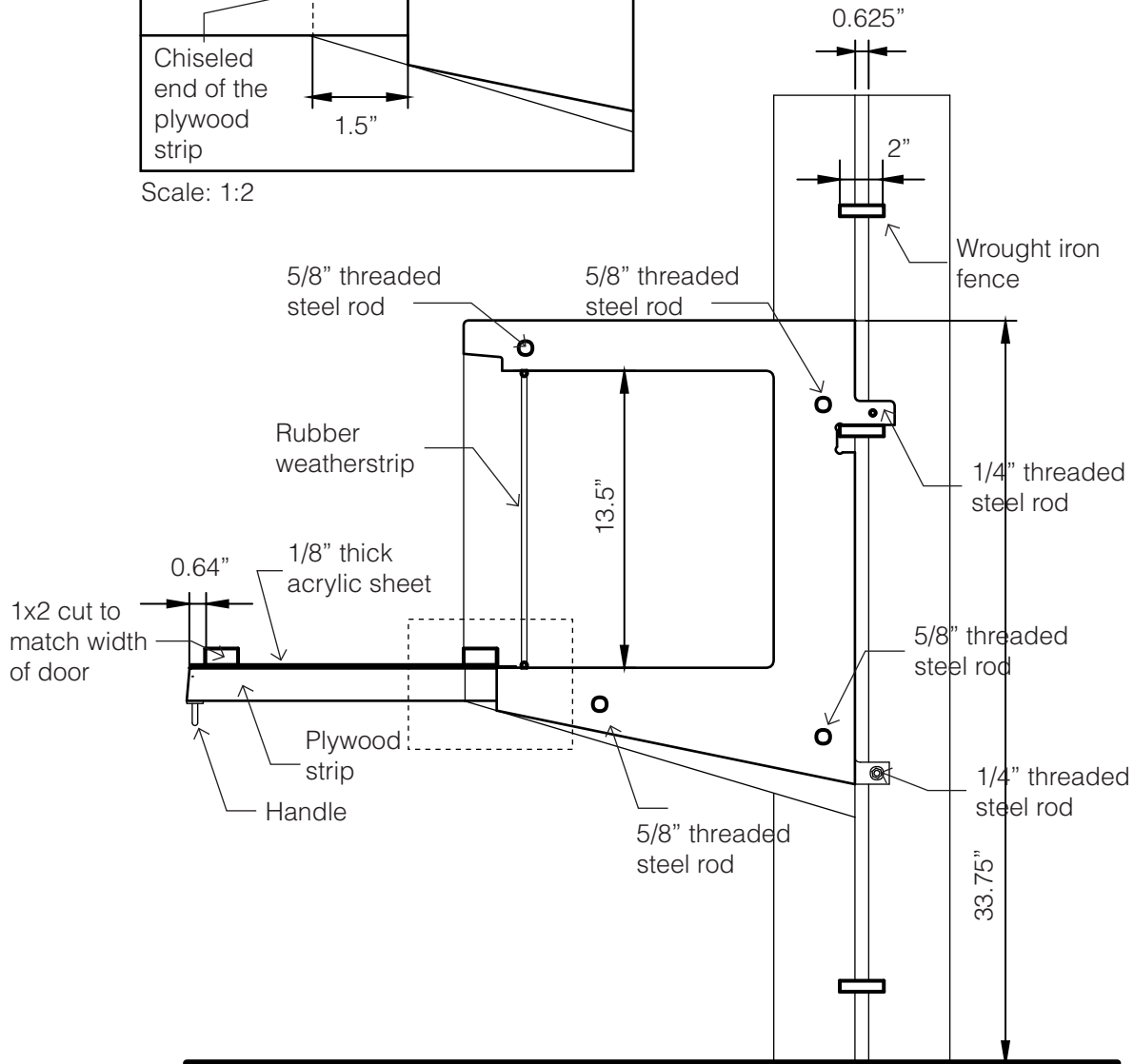
2 Back Elevation
Scale: 1"=1'



3 Section through seat
Scale: 1:6



Scale: 1:2



4 Section through bookshelf
Scale: 1:6