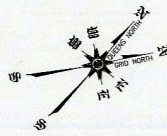


Socrates Sculpture Park, Long Island City, Queens, NY

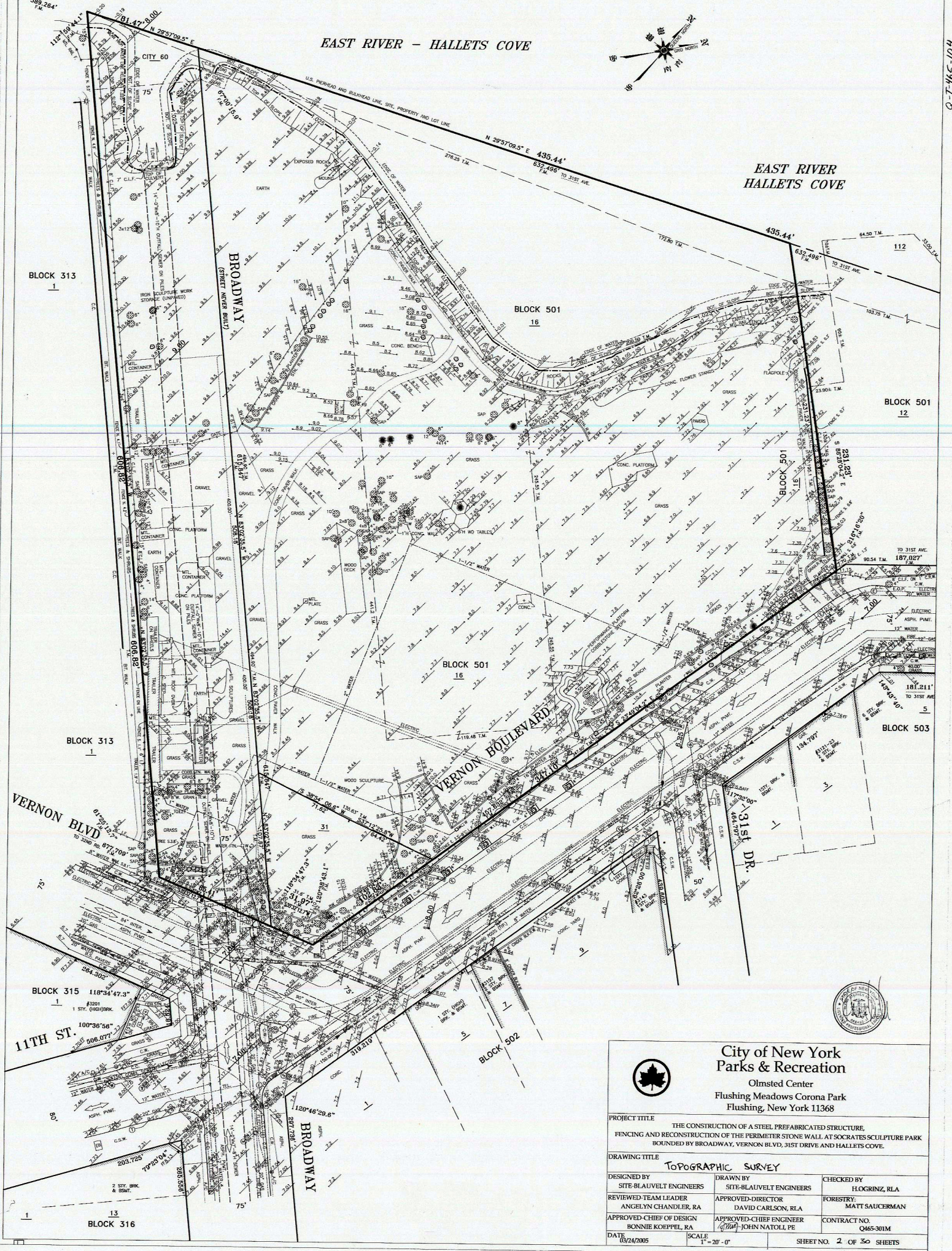


EAST RIVER - HALLETS COVE



EAST RIVER  
HALLETS COVE

Q-7465-104



**City of New York  
Parks & Recreation**  
Olmsted Center  
Flushing Meadows Corona Park  
Flushing, New York 11368

PROJECT TITLE THE CONSTRUCTION OF A STEEL PREFABRICATED STRUCTURE, FENCING AND RECONSTRUCTION OF THE PERIMETER STONE WALL AT SOCRATES SCULPTURE PARK BOUNDED BY BROADWAY, VERNON BLVD, 31ST DRIVE AND HALLETS COVE.

DRAWING TITLE <b>TOPOGRAPHIC SURVEY</b>		
DESIGNED BY SITE-BLAUVELT ENGINEERS	DRAWN BY SITE-BLAUVELT ENGINEERS	CHECKED BY HOGRINZ, RLA
REVIEWED-TEAM LEADER ANGELYN CHANDLER, RA	APPROVED-DIRECTOR DAVID CARLSON, RLA	FORESTRY: MATT SAUCERMAN
APPROVED-CHIEF OF DESIGN BONNIE KOEPEL, RA	APPROVED-CHIEF ENGINEER JOHN NATOL, PE	CONTRACT NO. 0465-301M
DATE 03/24/2005	SCALE 1" = 20' - 0"	SHEET NO. 2 OF 50 SHEETS