

A low-angle, upward-looking photograph of a modern architectural structure. The ceiling is composed of large, rectangular, blue-grey panels arranged in a grid pattern. Several dark, metallic structural beams or columns are visible, extending from the bottom left towards the center. The lighting is bright, creating strong shadows and highlights on the panels and beams. The overall composition is dynamic and emphasizes the geometric forms of the building.

THE CAMPBELL SPORTS CENTER

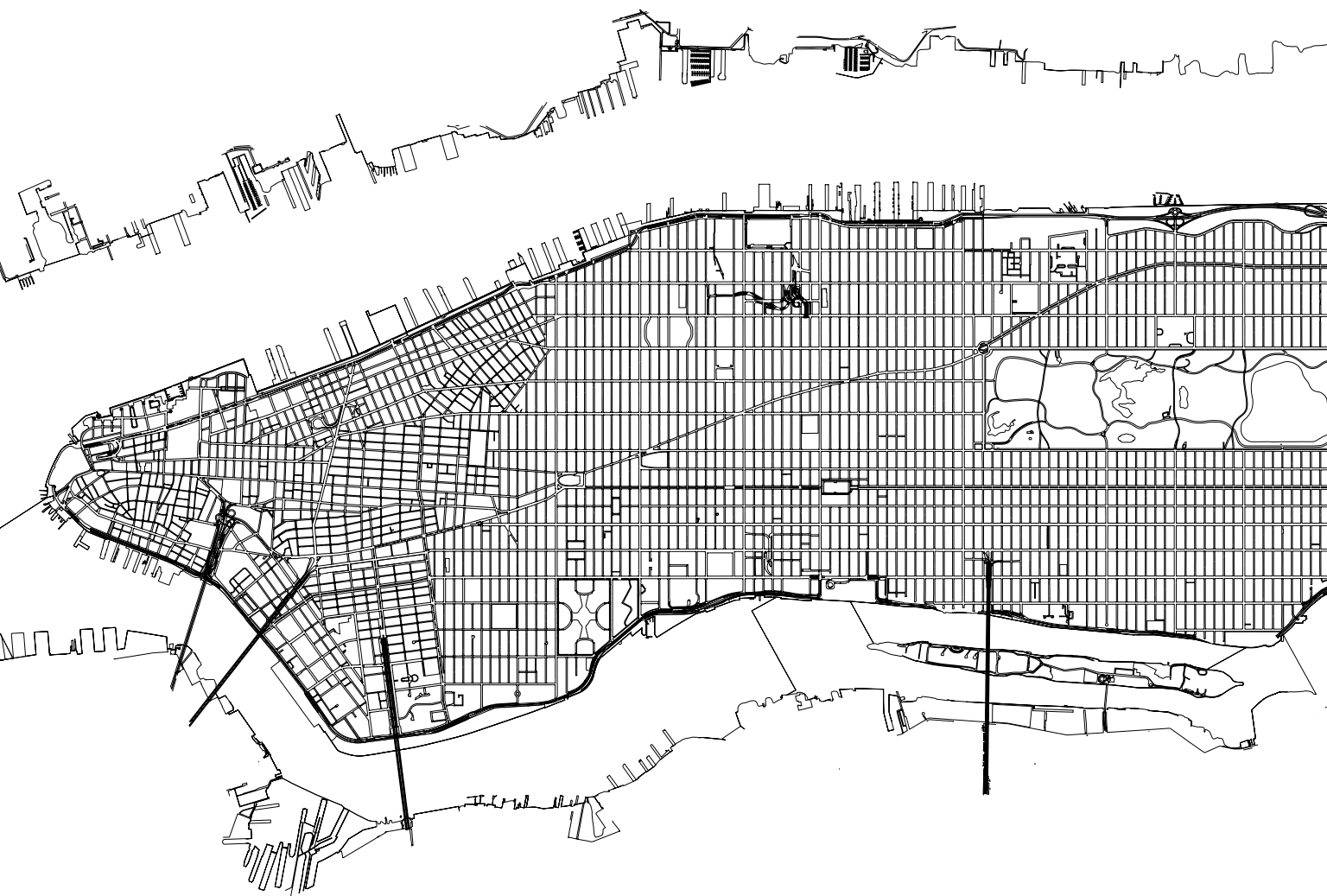
COLUMBIA UNIVERSITY

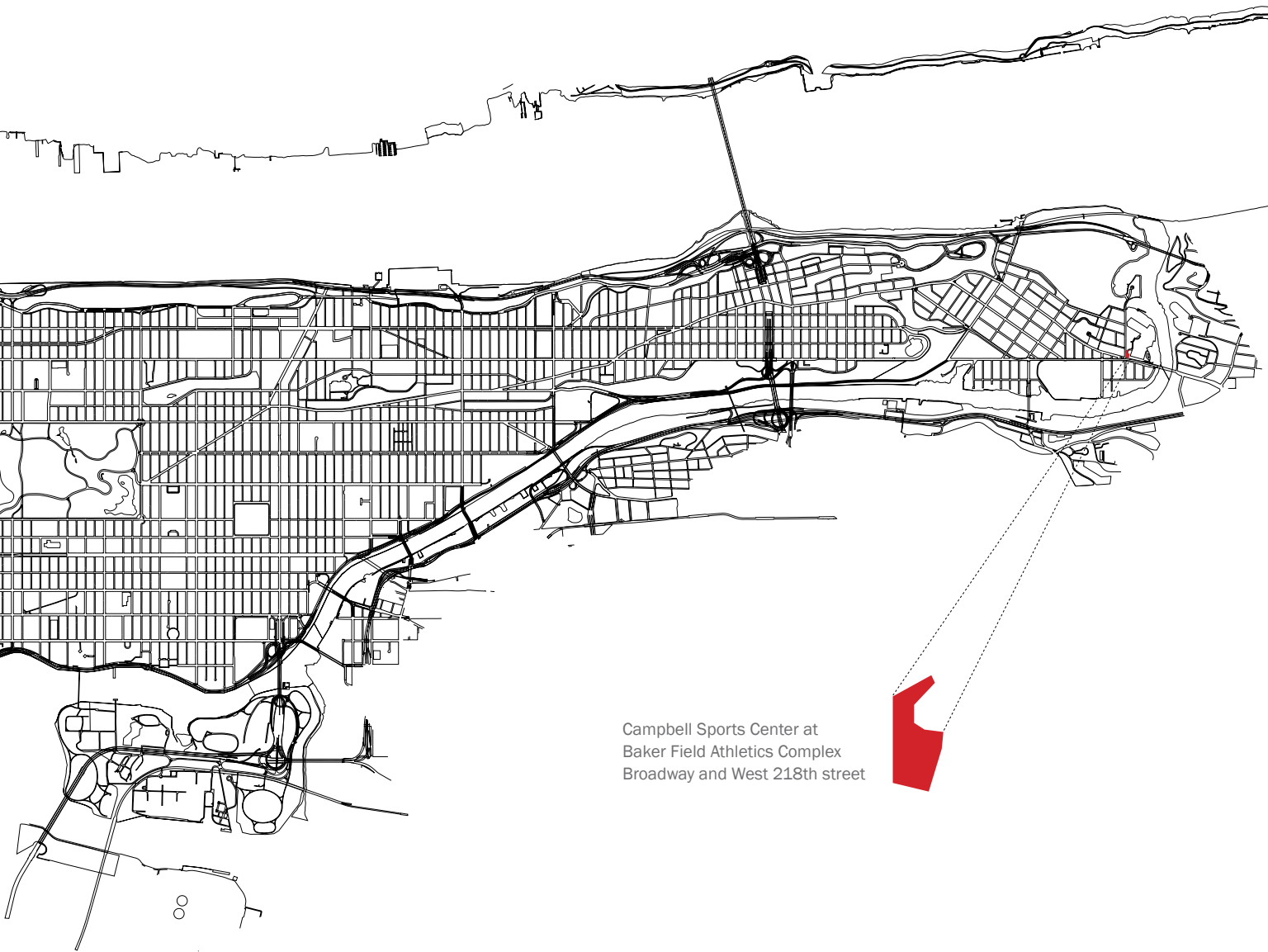


THE CAMPBELL SPORTS CENTER

Columbia University
Baker Athletics Complex

STEVEN HOLL ARCHITECTS

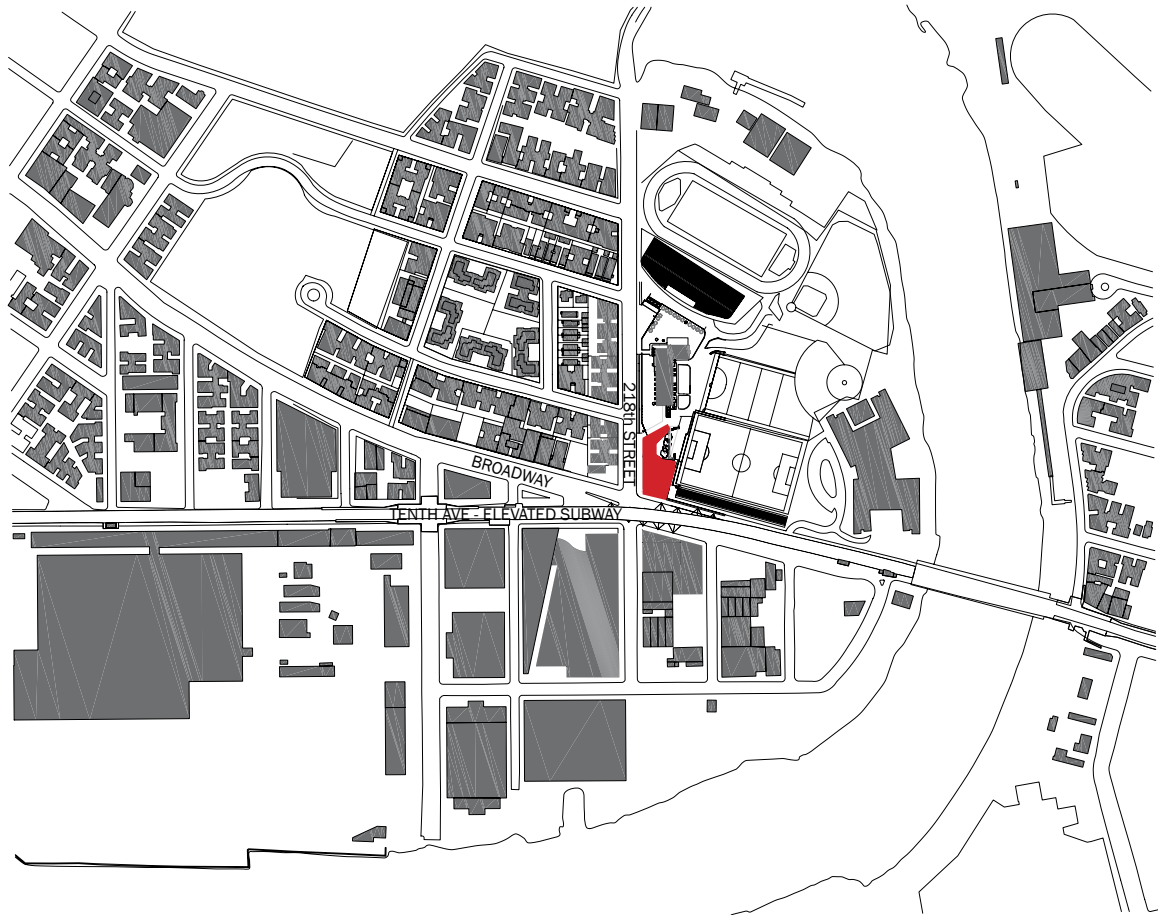




Campbell Sports Center at
Baker Field Athletics Complex
Broadway and West 218th street







Located on the corner of West 218th street and Broadway—the northernmost edge of Manhattan, where Broadway crosses with Tenth Avenue and the elevated tracks of the 1 subway line—the Campbell Sports Center forms a new gateway to the Baker Athletics Complex, the primary athletics facility for Columbia University’s outdoor sports program.

The first new athletics building to be constructed on Columbia University’s campus since the Marcellus Hartley Dodge Physical Fitness Center was built in the mid-1970s, the Campbell Sports Center will be the new cornerstone of the revitalized Baker Athletics Complex and provides increased program space for the entire intercollegiate athletics program.

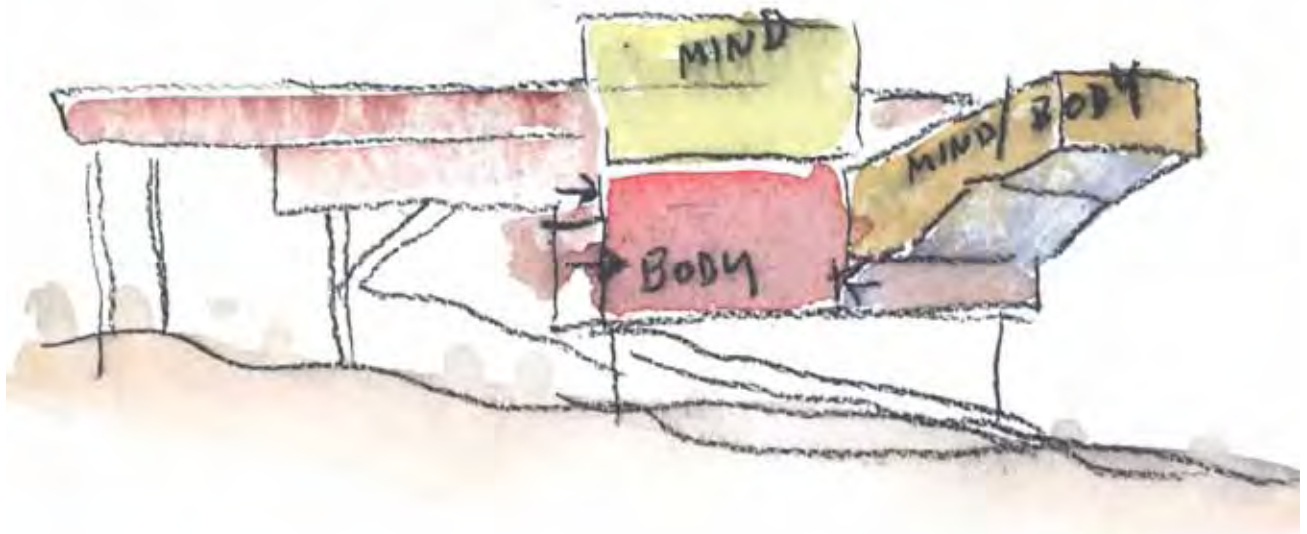




The Campbell Sports Center aims at serving the mind, the body and the mind/body for aspiring scholar-athletes. The design concept “points on the ground, lines in space”—like field play diagrams used for football, soccer, and baseball—develops from point foundations on the sloping site. Just as points and lines in diagrams yield the physical push and pull on the field, the building’s elevations push and pull in space.

A piece of the urban infrastructure, rather than an isolated building, the Campbell Sports Center shapes an urban corner on Broadway and 218th street, then lifts up to form a portal, connecting the playing field with the streetscape. Extending over a stepped landscape, blue soffits heighten the openness of the urban scale portico to the Baker Athletics Complex. Terraces and external stairs, which serve as “lines in space,” draw the field play onto and into the building and give views from the upper levels over the field and Manhattan.

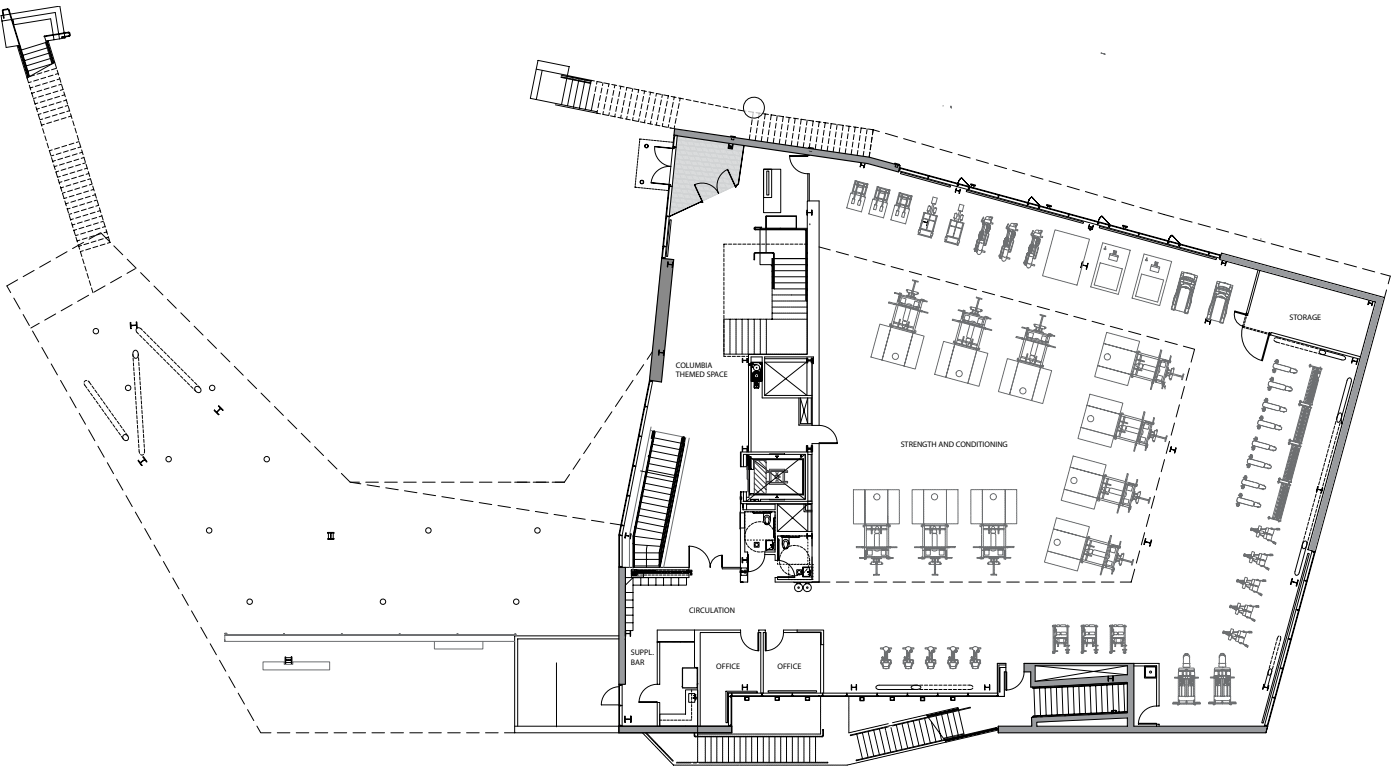




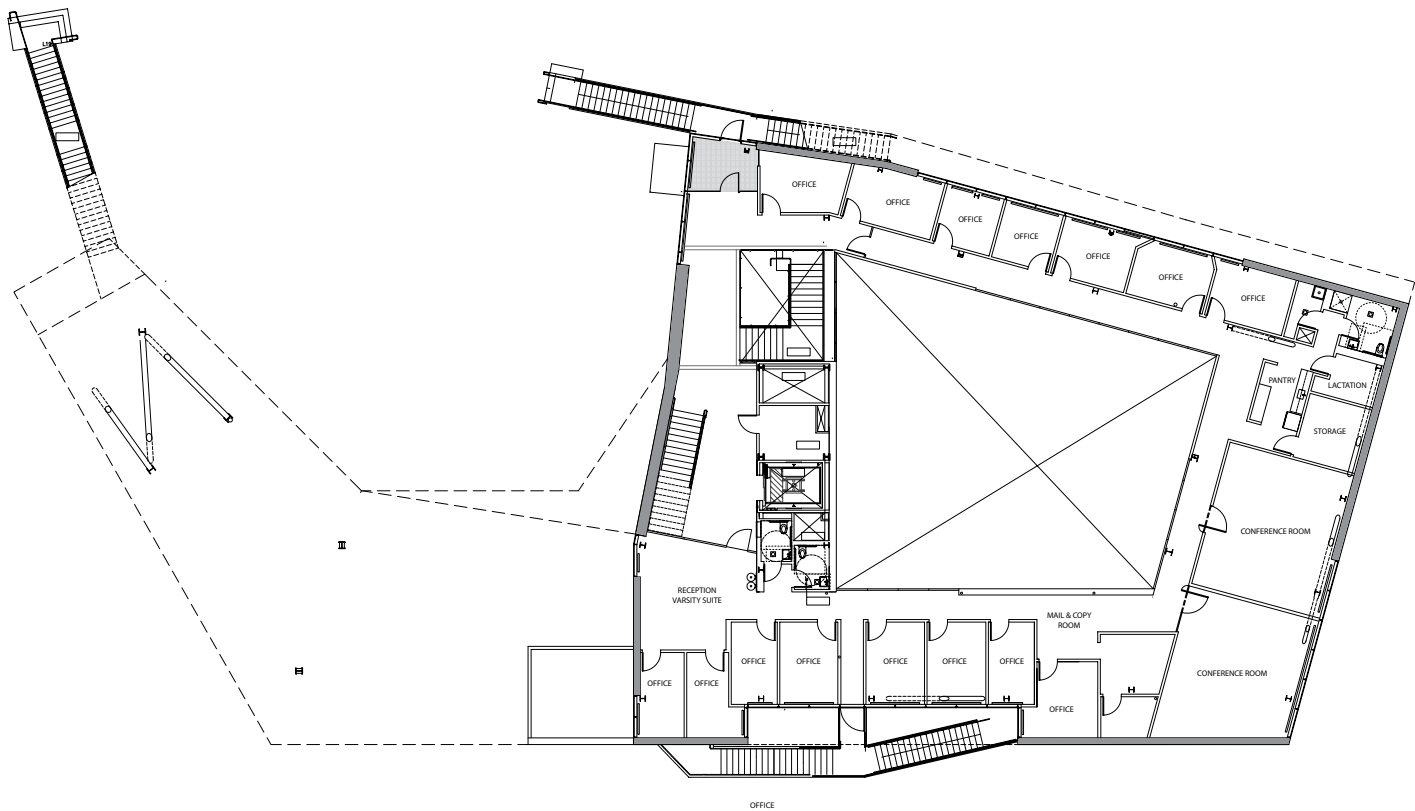
The building is stratified in 3 layers of different programs.
Each layer features one of the main aims:

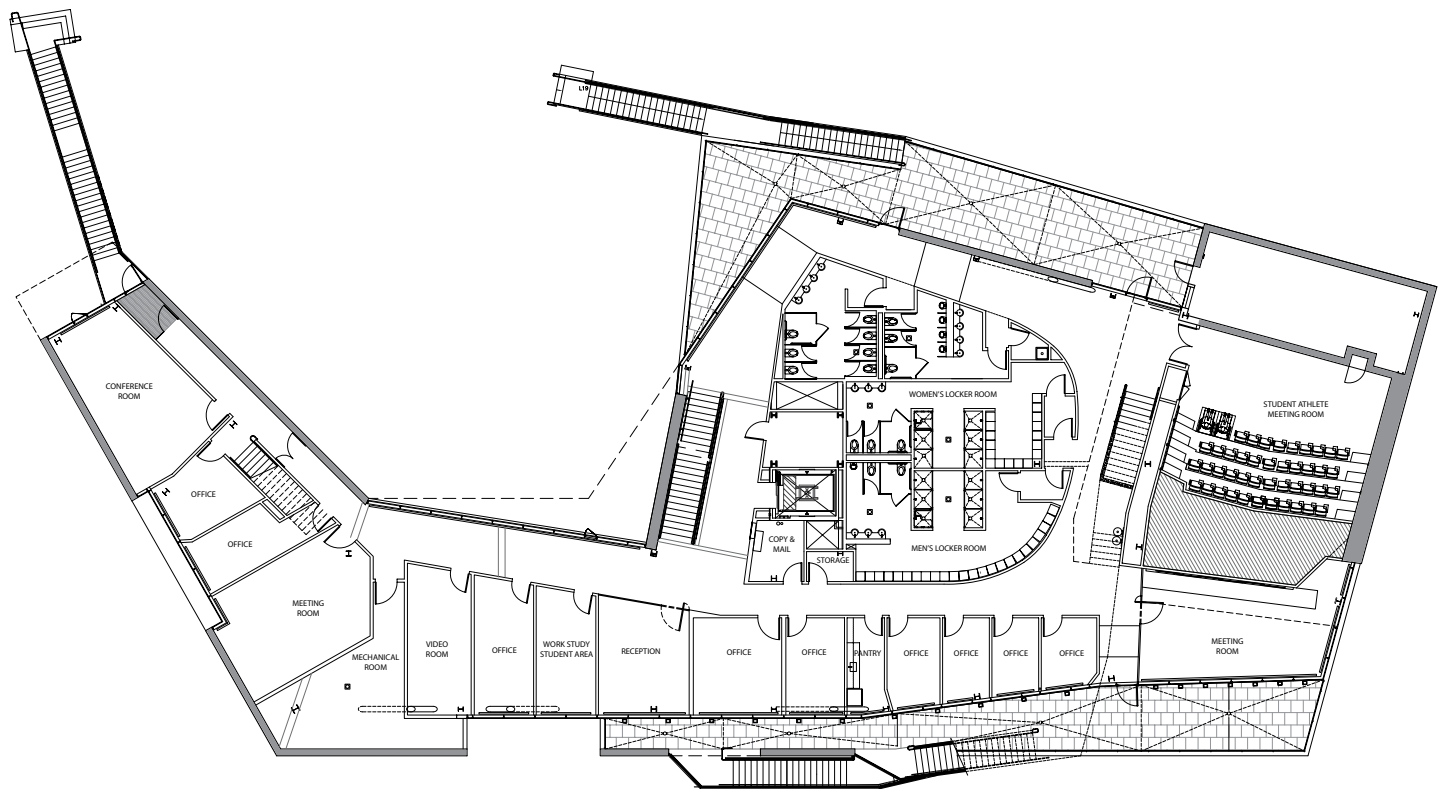
Strength and conditioning level - THE BODY
Student-athlete theater - THE MIND/BODY
Study space and hospitality zone - THE MIND

The 48,000 square foot facility houses strength and conditioning spaces, offices for varsity sports, theater-style meeting rooms, a hospitality suite and student-athlete study rooms.

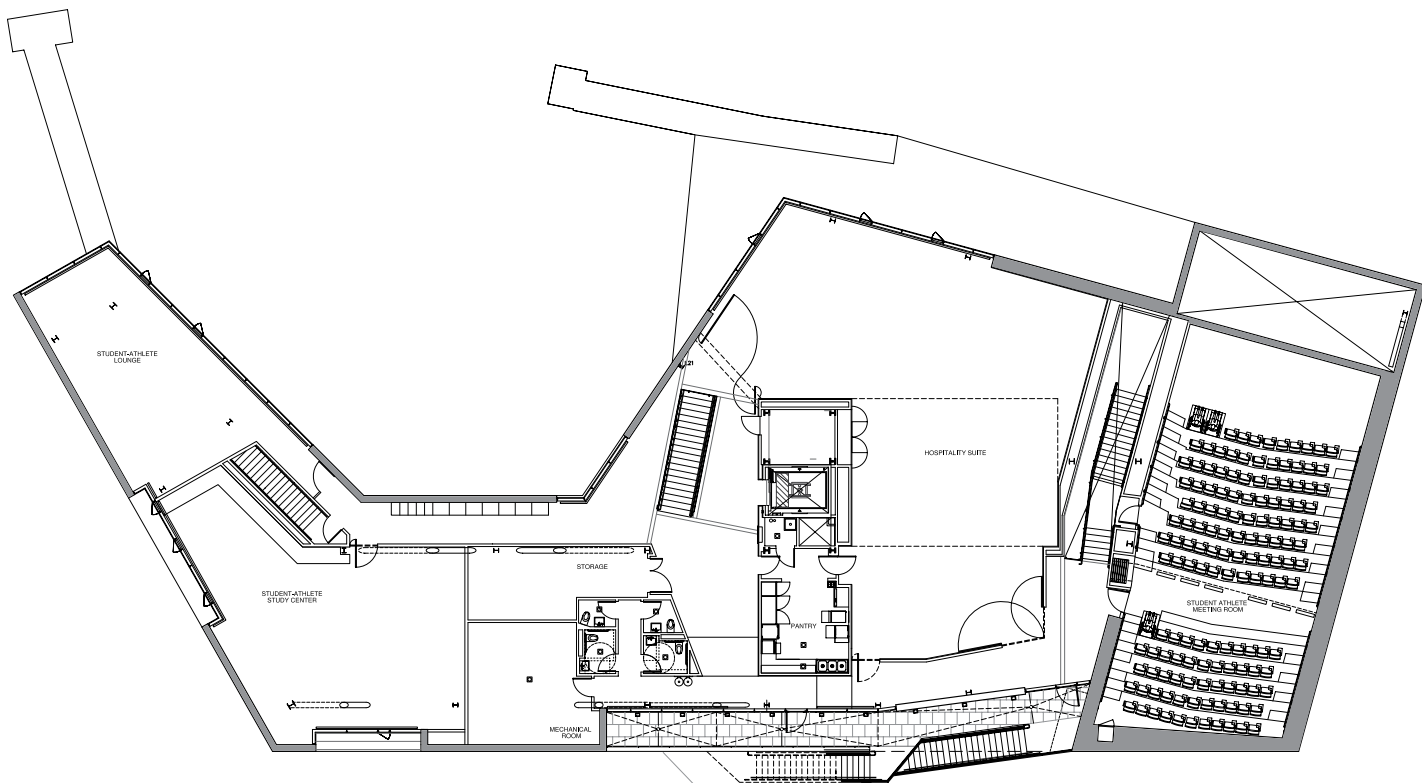


2nd Floor



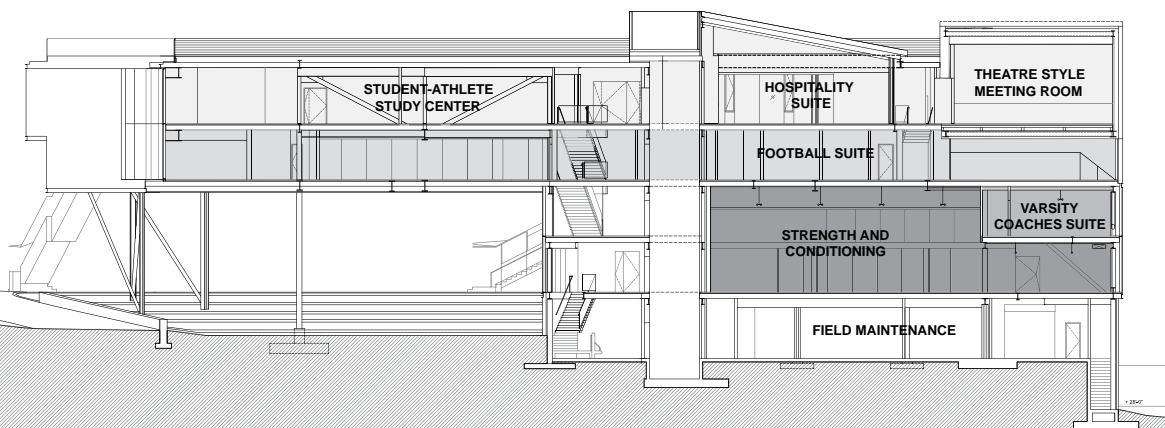


4th Floor





CAMPBELL SPORTS CENTER

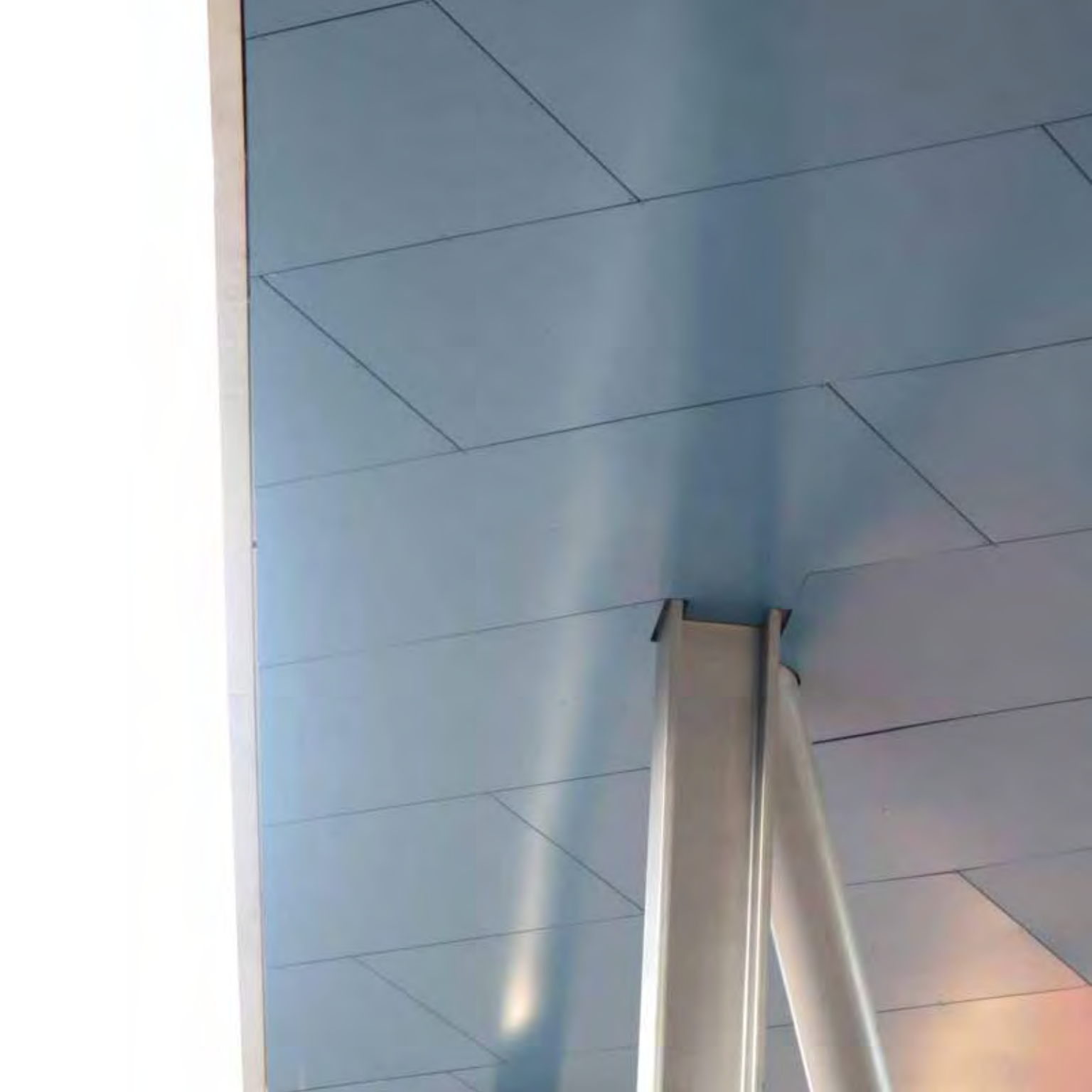






Our urban experience is made up of partial views; a glance down an alley, a view up a facade, a layer of space beyond an opening. The Campbell Sports Center is a building that creates and is experienced through partial urban views. It frames the entrance to Baker Field, looking back it brackets the apartment building across the street. It merges with the elevated tracks of the subway and with the Broadway Lift Bridge in the distance.







With an exposed concrete and steel structure and a sanded aluminum facade, the building connects back to Baker Field's unique history. In 1693, The Kings Bridge, which spanned the Spuyten Duyvil Creek was the main access route into Manhattan. The current infrastructure of Broadway Bridge carries the elevated subway, and Broadway, with a lift capacity of hundreds of tons. Its detail and structure are reflected in the Campbell Sports Center.























THE CAMPBELL SPORTS CENTER

client

Columbia University

Architects

STEVEN HOLL ARCHITECTS

Steven Holl, Chris McVoy (design architect)

Chris McVoy (partner in charge)

Olaf Schmidt (associate in charge)

Marcus Carter, Christiane Deptolla, Peter Englaender, Runar Halldorsson, Jackie Luk,

Filipe Taboada, Dimitra Tsachrelia, Ebbie Wisecarver (project team)

CM

Structuretone/Pavarini McGovern

Façade Fabrication

Architectural Wall Systems

Facade Installation

City Newark Glass

Precast plank

Conewago

Steel

Weir Welding

Structural Consultant

Robert Silman Associates

MEP

Icor Associates

Curtain Wall

W.J. Higgins & Associates

Code

Design 2147 Limited

Energy Modeling

TRANSSOLAR

Civil Engineer

Hirani Engineering

Lighting

Wald Studio

Cost

Davis Langdon

AV/IT/Security

The Clariant Group

Acoustics

Cerami & Associates, Inc

Specifications

Construction Specifications Inc